



MANUEL ORTIZ REAL ESTATE

559-972-0909 | manuelortizjr.com | LIC# 01788064



4.35± ACRES
Pixley, CA

12369 Ave 118, w/ 1880 sf Home

PRICE REDUCED
\$343,000

APN 295-040-010

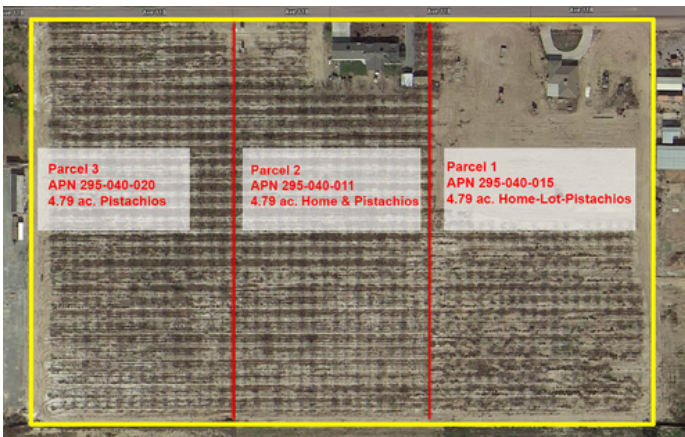
Property Details

4.35± Acres grandfathered into the M-1 Light Industrial Zoning Area, north of Pixley. Features 1880 s.f. living space, large family room with 3 bedrooms and 1.5 baths on 4.35± acres. Property has a domestic well with a 5 hp submersible pump. Well depth 500ft. and 1000-gallon water tank. The home receives natural gas and recently had a large addition added.

Agent Remarks

This is a great opportunity to purchase a property where you can both live on and run your business. Any of the neighboring vacant properties cannot build homes, but this home was built before Tulare County rezoned the area. Perfect for horses or 4-H project animals with pens and corals, plus an open lot in the back to park equipment or add more corals. There are three parcels adjoining to the west for a total of 14.37± Acres with 2 homes & Pistachios that are also for sale.

Title & Escrow to be with Fay Minyard at Chicago Title in Tulare, CA.





MANUEL ORTIZ REAL ESTATE

559-972-0909 | manuelortizjr.com | LIC# 01788064

Property Map



Disclaimer: The information in this document was obtained from reliable sources. Any interested party is advised to do their own due diligence regarding these properties and should not rely solely on this document. All acreages are approximate from aerial measurements.

230 North "J" Street, Tulare, CA 93274 | 559-972-0909 | Fax 559-400-7280
manuel@manuelortizjr.com



MANUEL ORTIZ REAL ESTATE

559-972-0909 | manuelortizjr.com | LIC# 01788064

Property Pictures



Disclaimer: The information in this document was obtained from reliable sources. Any interested party is advised to do their own due diligence regarding these properties and should not rely solely on this document. All acreages are approximate from aerial measurements.

230 North "J" Street, Tulare, CA 93274 | 559-972-0909 | Fax 559-400-7280

manuel@manuelortizjr.com



MANUEL ORTIZ REAL ESTATE

559-972-0909 | manuelortizjr.com | LIC# 01788064

Location Map



Disclaimer: The information in this document was obtained from reliable sources. Any interested party is advised to do their own due diligence regarding these properties and should not rely solely on this document. All acreages are approximate from aerial measurements.

230 North "J" Street, Tulare, CA 93274 | 559-972-0909 | Fax 559-400-7280

manuel@manuelortizjr.com